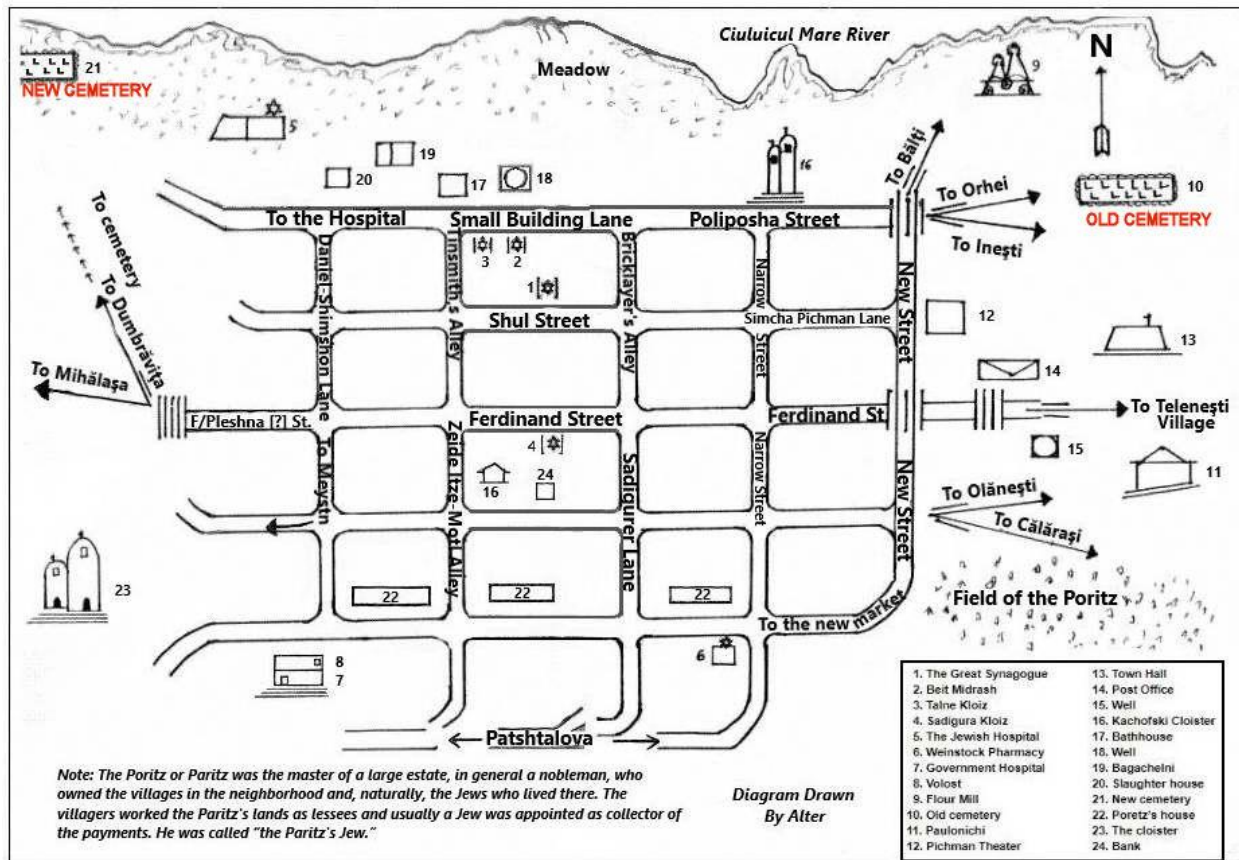


The Old Jewish Cemetery of Teleneshty

Before 1917 Teleneshty was part of the Orgeev Uezd, Bessarabia gubernia of the Russian Empire. Now it is a center of the Teleneshty district of Republic of Moldova.

Старое Еврейское Кладбище, Теленешты, Telenești, Moldova

Final report, Yefim Kogan, December 12, 2024



From old map included into Teleneshty Yizkor book

Town coordinates: 47°30' N 28°22' E

Contents

Introduction	2
Other names of Teleneshty	2
Location, Maps	2
History, Jewish Population and more	3
Photographing, indexing project, Volunteers	3
Oldest graves	5
Images from the cemetery	5

Introduction

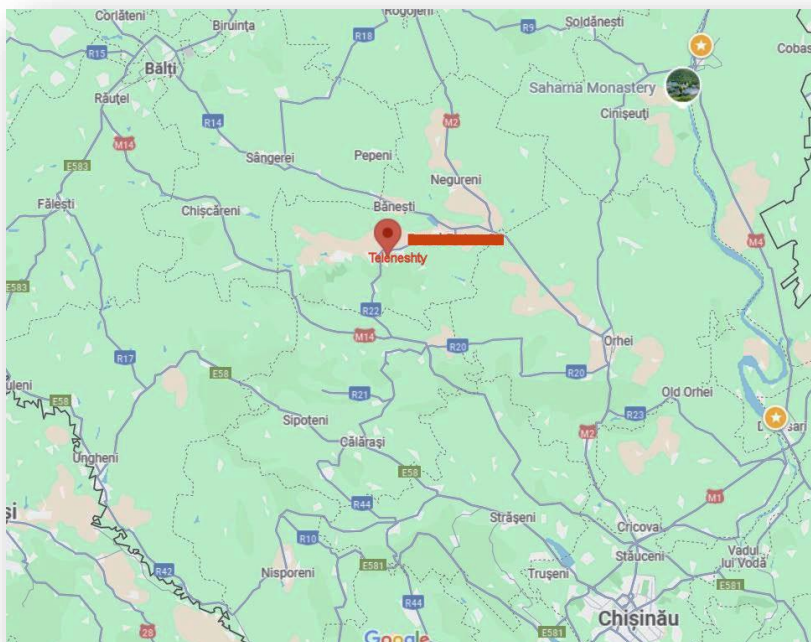
The project was first done in 2006 and included both OLD and NEW cemeteries together. There were a total of 911 records and photographs. In 2021 we received another 500 images of tombstones from **Joyce Field** (z"l). So, this is the second round of work for Teleneshty two cemeteries.

Other names of Teleneshty

Telenești [Rom, Mold], Teleneshty [Rus], Telenesht [Yid], Teleneszty [Pol], Telenesht'-Tyrg, Telenesti Sat, Telenești Târg, Teleneshti Noi.

Location, Maps

Google map of the Teleneshty region. 18 miles S to [Călărași](#), 23 miles ESE to Orgeev, 27 miles NW to Beltsi, 27 miles WSW to Pyrlitsa, 57 miles SE to Dubossary, 61 miles NW to Rybnitsa, 52 miles NW of Kishinev



Teleneshty on a Google Map

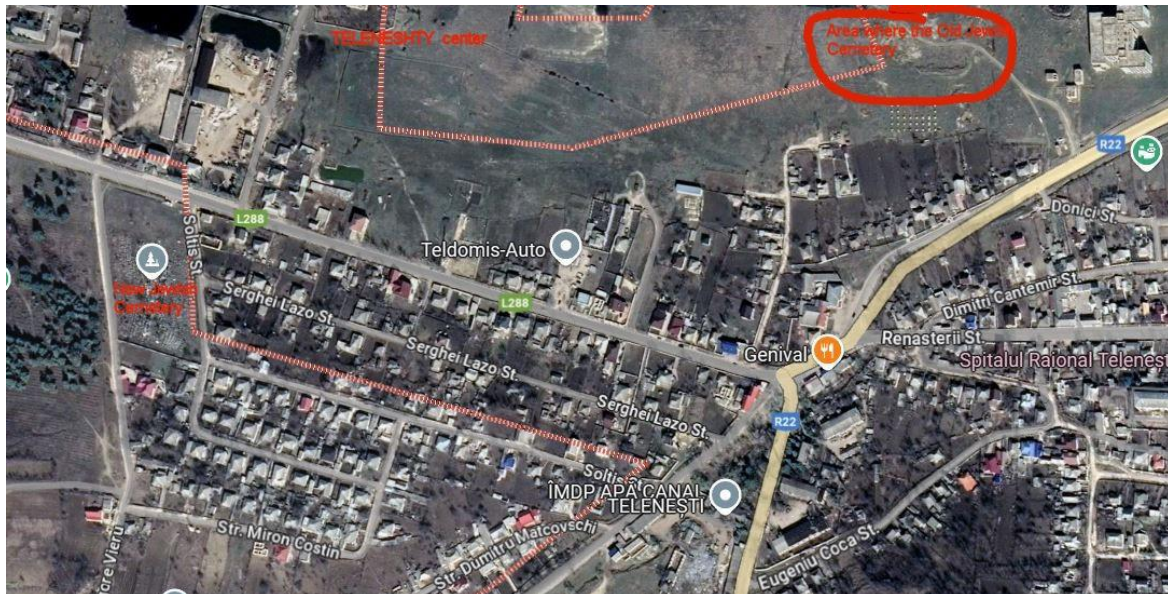
History, Jewish Population and more

Teleneșty was found as a Jewish Agricultural Colony in the first part of 19 century.

1,637 Jews lived in Teleneșty in 1847, 3,876 Jews lived in Teleneșty in 1897 from a total population of 4,379. In 1924 there were 334 Jewish businesses for a total population in the town of 5,100. 2,811 Jews from a total of 3,803 lived in Teleneșty in 1930.

Yizkor Book of the Jews of Teleneșty of Bessarabia(Telenești, Moldova), part of it is translated - <https://www.jewishgen.org/yizkor/Teleneșty/Teleneșty.html>

Teleneșty at the wikipedia <https://en.wikipedia.org/wiki/Teleneșty>



Teleneșty center, Google Map, on the left side marked in red is New Jewish cemetery, and on the right side the region where likely is the Old Jewish Cemetery.

Photographing, indexing project, Volunteers

Photographing was done by **Marcel Mindrescu** from Romania. **Joyce Field** contributed photos from her travel to Bessarabia. **Shily Karni** and **Yoni Kupchik** helped with translation in 2021. Finally, the translation of the new set was done by **Nathan Gabriel**. A number of images I put on ViewMate and got help from **Benyamin Tzvi Kerman** and **Fredel Fruhman**, Thanks a lot to everybody who helped on this project.

Language of the inscriptions: Russian, Russian and Hebrew, Hebrew.

Dates: The inscription we were able to read were from around 1820s – 1840s

There are **21** records with **21** images for **Teleneșty Old Jewish Cemetery**.

Here is link to ALL images for that cemetery: [Graves at Teleneșty Old cemetery](#)

Here are **21 records** for that cemetery. In many cases we made guesses, because most of the graves are broken and inscription is barely visible.

	Given Name(s)	Date of Death (Hebrew)	Hebrew Name	Father's Name	Photo Filename	Comments/Notes
1					IM006209.jpg	Broken, illegible
2	Iosef	21 Cheshvan	Iosef ben Tzvi	Tzvi	IM006210.jpg	
3	Miriam?	12 / 22 Adar II 5585	Miriam? bat Zecharyahu	Zecharyahu	IM006216.jpg	Important woman
4	Moshe	Eve of 1 Tevet 55??	Moshe ben David Zeev	David Zeev	IM006221.jpg	
5					IM006225.jpg	Partial and illegible
6	Rivka	Rosh Chodesh Shevat 5592	Rivka Gitel bat Yaakov	Yaakov	IM006226.jpg	
7	Hertzil	9 Adar 55?3 / 5603?	Hertzil ben Tzvi	Tzvi	IM006228.jpg	
8	Sara?	1 Sivan ???	Sara?		IM006229.jpg	Important woman. Partly illegible
9					IM006231.jpg	Broken, illegible
10					IM006232.jpg	Broken, illegible
11	Bension?	12 Tamuz ?	Bension? ben Yaakov?	Yaakov?	IM006234.jpg	Illegible
12	Pr?		Pr? bat Yosef?	Yosef?	IM006235.jpg	Illegible. Grave of a woman.
13		?? Cheshvan 5603			IM006236.jpg	Broken
14	Golde	4 Iyyar 5603	Golde bat Leib	Leib	IM006237.jpg	Important woman
15		559?			IM006238.jpg	Broken, illegible
16		55??			IM006239.jpg	Broken, illegible
17	Khaim	10 Adar ??	Khaim Tzvi ben Shmuel	Shmuel	IM006241.jpg	Broken
18					IM006242.jpg	Broken, illegible
19	Miriam Sara		Miriam Sara Rakhel bat ?		IM006243.jpg	Inscription reads "Here lies the girl". Broken grave.
20	Moshe?	Pesach eve 5584? / 5609?	Moshe? ben Zeev	Zeev?	IM006244.jpg	"Passed on Pesach Eve", rest illegible
21					IM006252.jpg	Illegible

Oldest graves



One of the oldest graves

Important woman

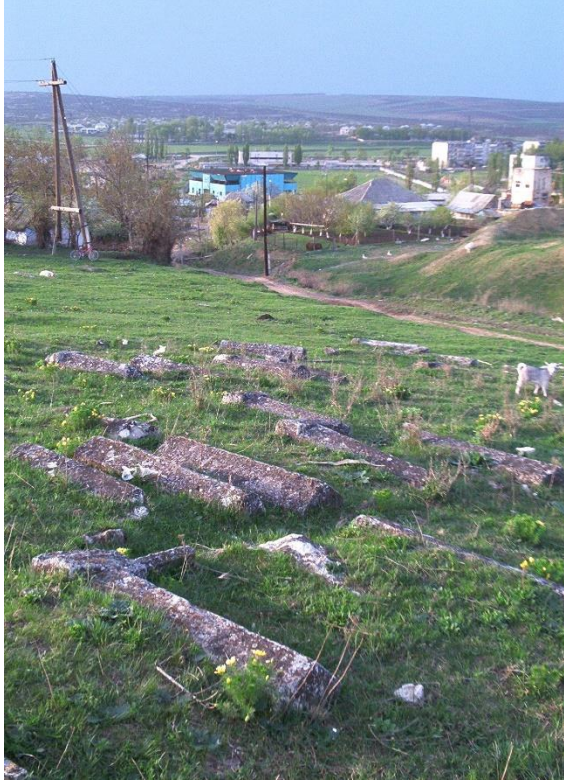
Miriam? bat Zecharyahu

12 or 22 Adar II 5585

(2 or 12 March 1825)

Images from the cemetery





Parts of the
Old Cemetery

