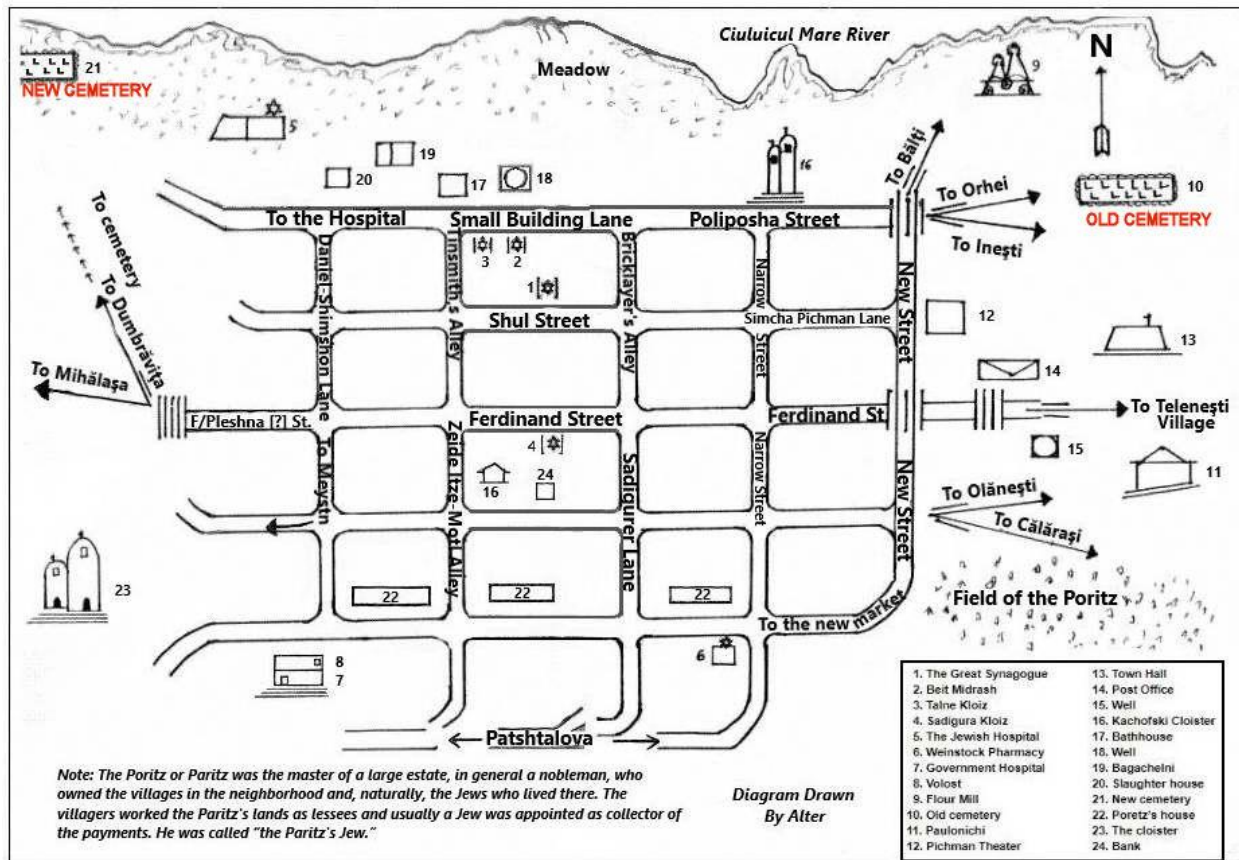


The New Jewish Cemetery of Teleneshty

Before 1917 Teleneshty was part of the Orgeev Uezd, Bessarabia gubernia of the Russian Empire. Now it is a center of the Teleneshty district of Republic of Moldova.

Новое Еврейское Кладбище, Теленешты, Telenești, Moldova

Final report, Yefim Kogan, December 12, 2024



From old map included into Teleneshty Yizkor book

Town coordinates: 47°30' N 28°22' E

Contents

Introduction	2
Other names of Teleneshty	2
Location, Maps	2
History, Jewish Population and more	3
Photographing, indexing project, Volunteers	3
Oldest graves	5
Images from the cemetery	6

Introduction

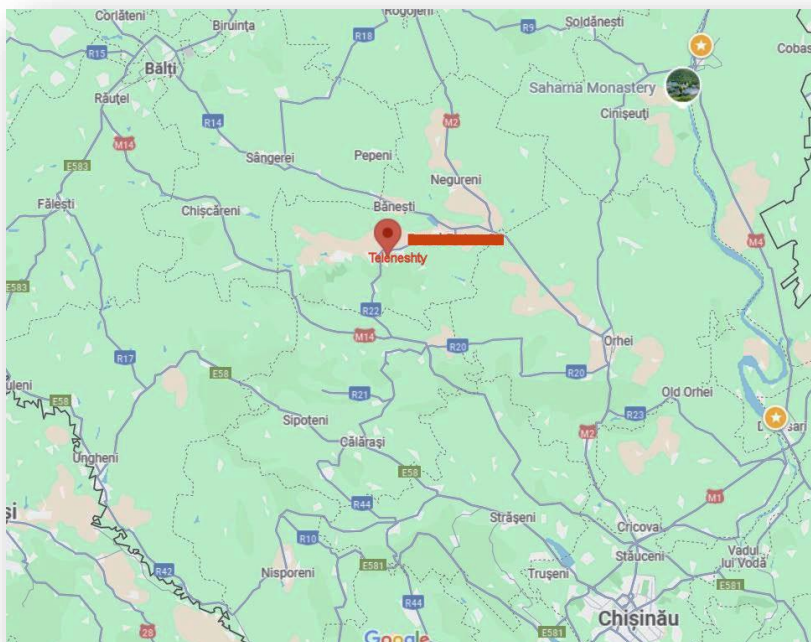
The project was first done in 2006 and included both OLD and NEW cemeteries together. There were a total of 911 records and photographs. In 2021 we received another 500 images of tombstones from **Joyce Field** (z"l). So, this is the second round of work for Teleneshty two cemeteries.

Other names of Teleneshty

Telenești [Rom, Mold], Teleneshty [Rus], Telenesht [Yid], Teleneszty [Pol], Telenesht'-Tyrg, Telenesti Sat, Telenești Târg, Teleneshti Noi.

Location, Maps

Google map of the Teleneshty region. 18 miles S to [Călărăși](#), 23 miles ESE to Orgeev, 27 miles NW to Beltsi, 27 miles WSW to Pyrlitsa, 57 miles SE to Dubossary, 61 miles NW to Rybnitsa, 52 miles NW of Kishinev



Teleneshty on a Google Map

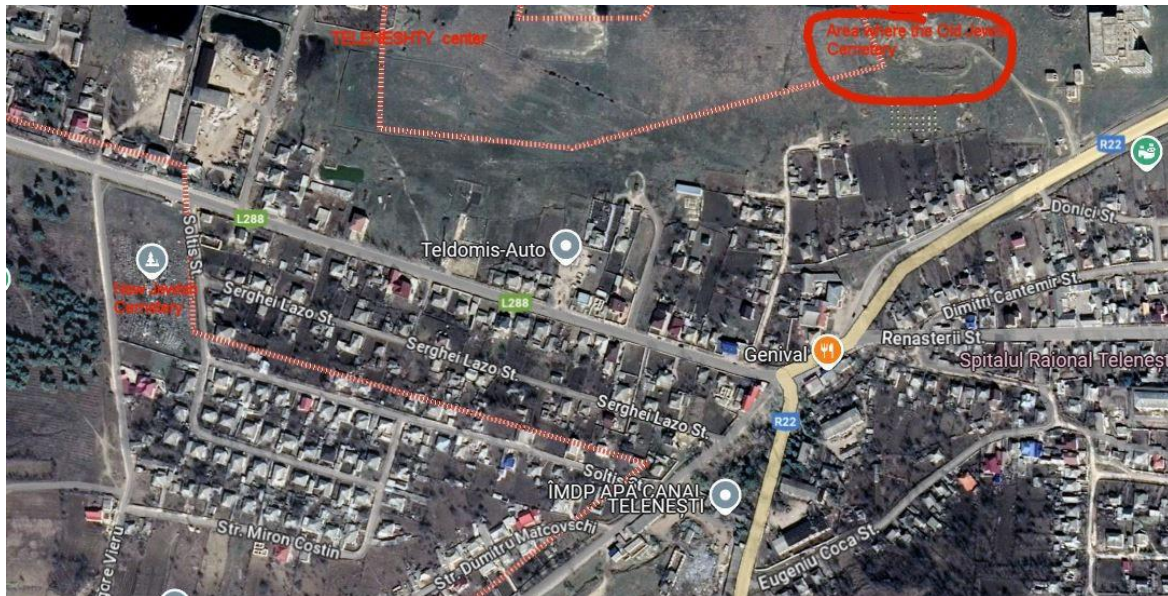
History, Jewish Population and more

Teleneșty was found as a Jewish Agricultural Colony in the first part of 19 century.

1,637 Jews lived in Teleneșty in 1847, 3,876 Jews lived in Teleneșty in 1897 from a total population of 4,379. In 1924 there were 334 Jewish businesses for a total population in the town of 5,100. 2,811 Jews from a total of 3,803 lived in Teleneșty in 1930.

Yizkor Book of the Jews of Teleneșty of Bessarabia(Telenești, Moldova), part of it is translated - <https://www.jewishgen.org/yizkor/Teleneșty/Teleneșty.html>

Teleneșty at the wikipedia <https://en.wikipedia.org/wiki/Teleneșty>



Teleneșty center, Google Map, on the left side marked in red is New Jewish cemetery, and on the right side the region where likely is the Old Jewish Cemetery.

Photographing, indexing project, Volunteers

Photographing was done by **Marcel Mindrescu** from Romania. **Joyce Field** contributed photos from her travel to Bessarabia. **Shily Karni** and **Yoni Kupchik** helped with translation in 2021. Finally, the translation of the new set was done by **Nathan Gabriel**. A number of images I put on ViewMate and got help from **Benyamin Tzvi Kerman** and **Fredel Fruhman**, Thanks a lot to everybody who helped on this project.

Language of the inscriptions: Russian, Russian and Hebrew, Hebrew.

Dates: The inscription we were able to read were from around 1890s – 1990s

80 graves were photographed from front and back, those were given two photos stitched together, like for these two graves



GRUMAN

Yona ben Tuviya
24 Tishrei 5699

(19 October 1938)

SHRAYBMAN

Shmuel ben Mikhel
13 Adar I 5698

(14 February 1938)



There are **1330** records with **1289** images for **Teleneshty New Jewish Cemetery**.

Here is link to Unknown images Teleneshty New Cemetery (no names): [Unknown Graves at Teleneshty New cemetery](#)

Oldest grave



One of the oldest graves

Rivka Zlata bat Moshe David

5 Kislev 5650

(25 November 1889)

Newest grave

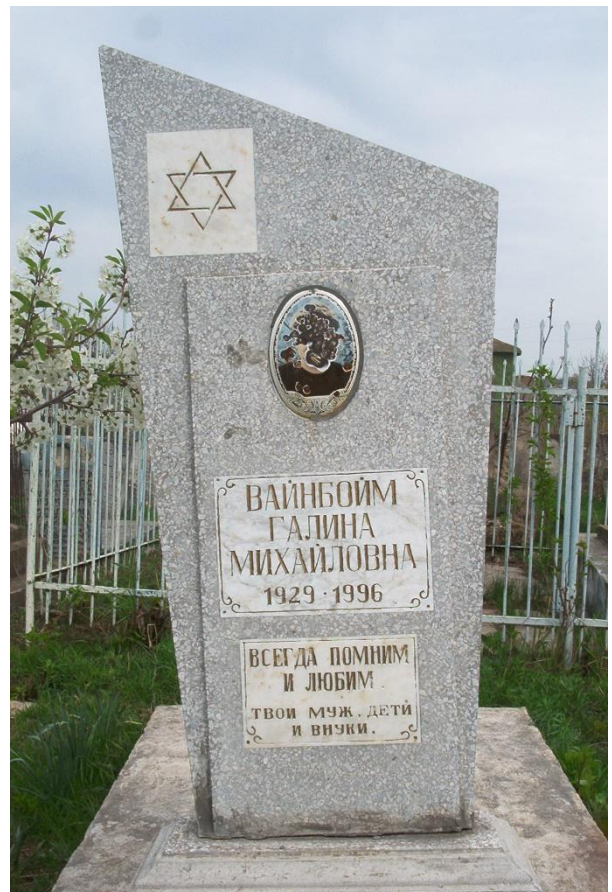
VAYNBOYM

Galina Mikhailovna (daughter of **Mikhail**)

1929 - 1996

Always remember and love

Your husband, children and grandchildren



Killed during the war

There are a number of gravestones with names of people who perished in the war. They likely are not buried in that cemetery. They still have a place in that cemetery and in the memory of people.



Eternal memory who were killed in 1941

GRIN Gersh, born in 1888

Male, born in 1870

TUKH Khaya, born in 1886

SHVARTS Khona, born in 1909

Common grave for Holocaust victims.

"Martyrs brutally killed in the year 5701(1941) in the village of Krasnashen by fascist murderers. Buried in the year 5712 (1952)"



Images from the cemetery



Blooming trees at the cemetery



Road and cemetery fence

